

BEEF

Dept. BF



John Flesch
Superintendent
Phone: (406) 450-1080
Email: flesch@rocketmail.com

BEEF CATTLE MISSION STATEMENT: To promote the beef industry through educational and promotional exhibits, displays and demonstrations and State Fair visitors. To showcase a variety of breeds of beef cattle for the entertainment and education of the public and to promote these breeds to seed stock and commercial cattlemen.

PREMIUMS: \$30,000

JUDGES: tba

VETERINARIAN ON CALL: Indian Hammer
Veterinary Service

PHONE: 965-3232

2005 SCHEDULE OF EVENTS

(All activities take place in the Livestock Pavilion)

Friday, July 8

5 pm Entry forms due, Entry Office

Friday, July 29

11-3 pm Beef cattle entries arrive.
3 pm All cattle are to be in place in the Livestock Pavilion

SHOW SCHEDULE: *Times listed after the initial show, are approximate. All scheduled shows will follow one after the other. Number of entries will determine Junior Exhibitor Shows.*

Saturday, July 30 Show Order

2 pm Shorthorn Breed Show, Open (Div. 6)

3:30 pm Junior Exhibitor Shorthorn Show (Div. 7)

4 pm or later Any Other Breed Show (Div. 8)
(Breeds to be announced)

Sunday, July 31 Show Order

12:30 pm Angus Breed Show, Open (Div. 1)
Junior Exhibitor Angus Show (Div. 2)
Registered Angus Steer Show (Div. 3)

3:30 pm Hereford/Polled Hereford Breed Show, Open (Div. 4)
Junior Exhibitor Hereford Show, Open (Div. 5)

5:30 pm Supreme Champion Challenge (Div 9)

7 pm All entries released

Every effort will be made to follow above schedule, but due to unforeseen circumstances, schedule is subject to change.

Premium checks will be available during the fair at the State Fair Bank. Please check with the department superintendent on dates of availability. Checks not collected will be mailed the week following the fair.

ATTENTION:

The following rule stated in General Information will be enforced for the 2005 fair.

All cattle, sheep, swine, and goats will need a Veterinary Health Inspection Certificate issued within 20 days of exhibit.

Certificate must accompany the animal upon arrival on the grounds and be available for examination for the duration of exhibit.

All breeds of beef cattle are welcome at the Montana State Fair!

SHOW DEFINITIONS:

OPEN BREED SHOWS: Separate Breed shows are offered for **Angus, Hereford/Polled Hereford,** and **Shorthorn** breeds. If less than 20 head and three separate exhibitors per open breed are shown in 2005, that breed show may not be offered at the 2006 State Fair.

ANY OTHER BREED SHOW(S): Separate shows will be added for any recognized breed when a minimum of 20 head are entered by three or more independent exhibitors. If competition warrants, AOB shows may be split into more than one division at discretion of management.

DIVISIONS:

1. ANGUS BREED SHOW
2. JUNIOR EXHIBITOR ANGUS SHOW
3. REGISTERED ANGUS STEER SHOW
4. HEREFORD & POLLED HEREFORD SHOW
5. JUNIOR EXHIBITOR HEREFORD & POLLED HEREFORD SHOW
6. SHORTHORN BREED SHOW
7. JUNIOR EXHIBITOR SHORTHORN SHOW
8. ANY OTHER BREED SHOW(S)
9. SUPREME CHAMPION CHALLENGE



NO DOGS WILL BE ALLOWED IN THE BARN

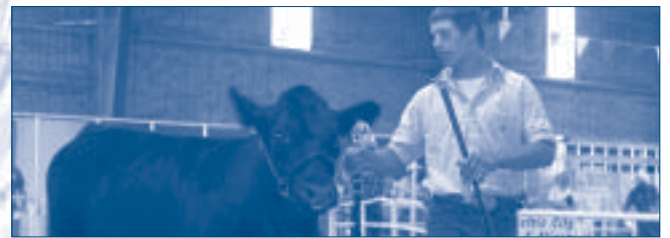
GENERAL RULES: (All Beef Divisions)

- a. All participants at Montana State Fair Events are responsible for reading the **General Information & Montana Department of Livestock Health, Brand and Import** sections of this handbook and complying with the policies listed therein.
- b. No entry will be considered complete unless accompanied by appropriate entry fees. **Late entries are subject to double entry fees on a space available basis.** Entry Fees: \$15 Open shows and \$10 Junior shows per head.

- c. All livestock exhibitors, herdsman and owners will purchase admittance tickets. A \$15 season ticket includes 10 adult admissions and/or a vehicle. Exhibitors 6-18 years may purchase a \$10 season ticket that includes 10 admissions-no vehicle. State Fair will provide one additional season admission ticket for each \$50 of entry fees.
- d. AGREEMENT TO ALL RULES AND REGULATIONS HEREIN STATED IS UNDERSTOOD WHEN THE EXHIBITOR SUBMITS THE ENTRY FORM.
- e. Use the entry form included in this book to enter beef divisions. Additional forms can be obtained from Montana State Fair by calling 727-8900 or by duplicating form in book. Entry forms and fees may be delivered to State Fair administration office, open weekdays 8 am to 5 pm. Mailed entry forms and fees should be sent to: Entry Office, Montana State Fair, 400 3rd ST NW, Great Falls, MT 59404.
- f. All possible care will be exercised by State Fair in handling exhibits, but no responsibility for loss or damage in transit or during any phase of the exhibit will be assumed by State Fair.
- g. Animals shown in all group classes must have been entered and shown in their respective individual class. Premiums will be paid for group classes provided there is competition.
- h. Champion exhibitors may be required to make publicity appearances. Cooperation is expected.
- i. If entries warrant, classes may be divided at the discretion of Montana State Fair Management.
- j. All cattle will be health & brand inspected BEFORE being allowed in the barn.
Inspection Hours: Friday 11-3 pm
(Other arrangements may be made by calling the Superintendent.)
- k. Cattle will be stalled in the Livestock Pavilion on wood chips/shavings. First bedding will be provided. Hay and bedding will be available for purchase. Straw will **only** be allowed in tie-out area. Tie-outs will be cleaned by 10:30 am
- l. **All cattle are required to be stalled in the Livestock Pavilion from 11:00 am until 7 pm each day until released. Tie outs are located on the west side of the Livestock Pavilion.**
- m. No additional fees are charged for fitting chutes or tie outs, but this privilege is allowed in designated areas only. Blocking & grooming chute(s) will not be allowed in the alleys.
- n. All cattle must be halter broke and manageable.
- o. Neck Ropes are required on all tied cattle. Nose rings are required to be used on all bulls, except suckling bull calves.
- p. Show numbers will be assigned per head and exhibitors are required to wear the assigned number at all times the individual animal is being judged.
- q. Exhibitors are requested to call the State Fair Entry Office for information pertinent to their exhibit.



- r. All animals must be registered on the records of the various Breed Associations of classes listed herein. Partnership owned animals must be entered in the name of owner appearing on the herd books of registry. Original registration papers must be provided. Legible tattoos are required. Applicable Breed Association Rules and Regulations shall govern if not addressed herein.
- s. Mothers of unweaned 2005 calves entered in registered classes will be allowed in the barn even if the cow is not entered, space permitting. Write pen or stall needed for nurse cow on entry form.
- t. All applicable rules of the respective Breed Associations will be enforced.
- u. As with all shows and events at the Montana State Fair, any person or group is encouraged to offer constructive suggestions and give recommendations to best conduct these shows and events in the most useful manner to benefit the beef cattle industry. State Fair management reserves the right to interpret all rules and arbitrarily settle all differences and questions not adequately addressed.



DIVISION 1: ANGUS BREED SHOW

REGULATIONS:

- a. For the American Angus Association to participate in premium payments 50 head will need to be shown.
- b. All animals must be registered in the herd book of the American Angus Association. The registration certificate issue date must be prior to the show.
- c. The skin color of all animals must be BLACK, except those animals having birthmarks or white hairs on black skin. Animals red in color, or with white skin above the underline, in front of the navel or on a leg or foot, are not eligible to show.
- d. All animals must be polled (free of horns or scurs). Scurs are defined as any portion of horny tissue attached to the skin of the horn set of a polled animal. Any product administered internally or used externally to alter the conformation and/or appearance of an animal for exhibition is prohibited. This includes the covering of white skin, false tail heads (or use of any false hair), use of graphite, powders, hemp or other similar substances externally and steroids, growth stimulants or artificial filling internally. Any animal found to be in violation will be barred from showing, with exception of false tail switches.

- e. All animals must have a legible ear tattoo for identification. The tattoo must correspond with the tattoo number on the official registration certificate. Once disqualified due to incorrect or illegible tattoo, animals cannot be re-tattooed and rechecked at the show.
- f. Exhibitors must have the original registration certificate on each animal available for inspection at the show.
- g. All animals must be shown within the official standard show classification of the American Angus Association.
- h. Only one person at a time shall lead animals into the show ring.
- i. For an exhibitor to be eligible at shows for premium moneys contributed by the American Angus Association, each exhibitor is subject to Part 3, Section IX of the Association's rules entitled *Eligibility, Conformation and Structure of Animals Presented for Exhibition*.
- j. **Any female shown with calf at side, the calf must be her natural calf and registered.**
- k. DNA marker or blood type for parentage verification – Under the Association Rules each animal for which entry application (registration) is received, may be subjected to a DNA marker type or blood type test to verify ACCURACY OF PARENTAGE as covered under Association Rules. Staff of the American Angus Association must supervise the collection of DNA or blood samples. Animals are often sampled at shows, fairs or events where the American Angus Association contributes premiums or where Association personnel participate. If a recorded parent is excluded (as a parent) as a result of DNA or blood type, the owner may request, at his own expense, the Association to determine the actual parent. Failure to determine the sire and dame disqualifies the animal's eligibility in the Angus herd book, and the registration certificate becomes null and void.
- l. Any classes, which exceed 15 head, will be broken into sub-classes.

ENTRY FEE: \$15 per class

PREMIUMS

of head

- 1 or 2: 1st, \$70; 2nd, \$60
- 3 to 5: 1st, \$80; 2nd, \$70; 3rd, \$60; 4th, \$40
- 6 to 8: 1st, \$90; 2nd, \$80; 3rd, \$70; 4th, \$50;
5th, \$40 6th, \$30 ; 7th, \$20; 8th, \$10
- 9 plus: 1st, \$100; 2nd, \$90; 3rd, \$80; 4th, \$70;
5th, \$60; 6th, \$50; 7th, \$40; 8th, \$30; 9th, \$20
- Groups: 1st, \$50; 2nd, \$40; 3rd, \$20

Grand Champion Bull and Female:.....\$100
Reserve Champion Bull and Female:.....\$50

JUNIOR HEIFER CALF

- BF-1-1 Junior heifer calves calved March 1, 2005 and after
- BF-1-2 Junior heifer calves calved between Feb 1-Feb 28, 2005
- BF-1-3 Junior heifer calves calved between Jan 1- Jan 31, 2005
- BF-1-4 Champion Junior Heifer Calf**
- BF-1-5 Reserve Champion Junior Heifer Calf**

SENIOR HEIFER

- BF-1-6 Late senior heifer calves calved between Nov 1-Dec 31, 2004
- BF-1-7 Early senior heifer calves calved between Sept 1-Oct 31, 2004
- BF-8 Champion Senior Heifer Calf**
- BF-9 Reserve Champion Senior Heifer Calf**

LATE SUMMER YEARLING HEIFER

- BF-1-10 Late summer yearling heifers calved between July 1-Aug 31, 2004
- BF-1-11 Early summer yearling heifers calved between May 1-June 30, 2004
- BF-1-12 Champion Intermediate**
- BF-1-13 Reserve Champion Intermediate**

JUNIOR FEMALE

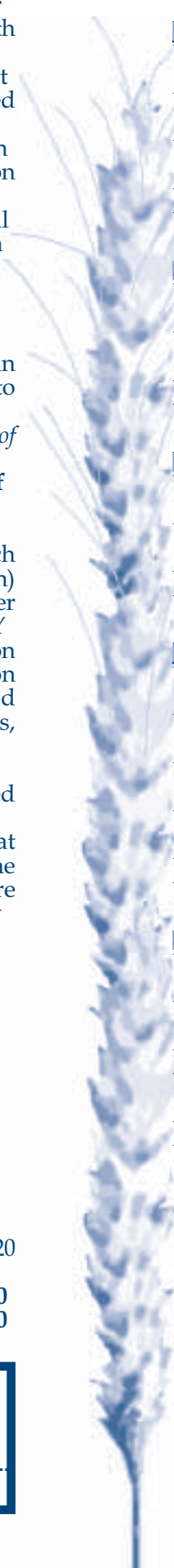
- BF-1-14 April junior yearling heifers calved between April 1-30, 2004
- BF-1-15 March junior yearling heifers calved between March 1-31, 2004
- BF-1-16 Early junior yearling heifers calved between Feb 1-Feb. 29, 2004
- BF-1-17 Early junior heifers calved between Jan. 1-Jan. 31, 2004
- BF-1-18 Champion Junior Female**
- BF-1-19 Reserve Champion Junior Female**

SENIOR FEMALE

- BF-1-20 Late senior yearling heifers calved between Nov.1-Dec 31, 2003
- BF-1-21 Early senior yearling heifers calved between Sept 1-Oct 31, 2003
- BF-1-22 Champion Senior Female**
- BF-1-23 Reserve Champion Senior Female**

**GRAND CHAMPION FEMALE
RESERVE GRAND CHAMPION FEMALE**

(Champions & Reserve Champions competing)



Sample Entry:	
Class Code	Description
BF-1 -10	Late summer yearling heifers calved ...

Note: Any female that qualifies for female classes in the Association's standard classifications are not eligible to show in the cow/calf classes.

COW/CALF PAIR

- BF-1-26 Cow/calf Class, Cows 3 years of age & younger, cows must be born January 1, 2002 through August 31, 2003. Calf must be the cow's most recent natural calf and be born Jan 1, 2005 or after
- BF-1-27 Cow/calf Class, Cows 4 years of age or older, cows must be born December 31, 2001 or earlier. Calf must be the cow's most recent natural calf and be born Jan 1, 2005 or after.
- BF-1-28 Grand Champion Cow/Calf Pair**
BF-1-29 Reserve Grand Champion Cow/Calf Pair
(Grand and Reserve Grand Champion cow/calf pairs do not show for grand champion female and are ineligible to compete in the get-of-sire, junior get-of-sire & breeders six-head classes.)

JUNIOR BULL CALF

- BF-1-30 Junior bull calves calved March 1, 2004 or after
- BF-1-31 Junior bull calves calved between Jan 1-Feb 28, 2005
- BF-1-32 Champion Junior Bull Calf**
BF-1-33 Reserve Champion Junior Bull Calf

SENIOR BULL CALF

- BF-1-34 Late senior bull calves calved between Nov 1-Dec 31, 2004
- BF-1-35 Early senior bull calves calved between Sept 1-Oct 31, 2004
- BF-1-36 Champion Senior Bull Calf**
BF-1-37 Reserve Champion Senior Bull Calf

INTERMEDIATE BULL

- BF-1-38 Late summer yearling bulls calved between July 1-Aug 31, 2004
- BF-1-39 Early summer yearling bulls calved between May 1-June 30, 2004
- BF-1-40 Champion Intermediate Bull**
BF-1-41 Reserve Champion Intermediate Bull

JUNIOR BULL

- BF-1-42 April junior yearling bulls calved between Apr 1-30,2004
- BF-1-43 March junior yearling bulls calved between March 1-31,2004
- BF-1-44 Early junior yearling bulls calved between Jan. 1-Feb. 29, 2004
- BF-45 Champion Junior Bull**
BF-46 Reserve Champion Junior Bull

SENIOR BULL

- BF-1-47 Senior yearling bulls calved between Sept 1-Dec 31,2003
- BF-1-48 Summer senior yearling bulls calved between May 1- Aug 31,2003
- BF-1-49 Two-year old bulls calved between Jan 1-Apr 30,2003
- BF-1-50 Champion Senior Bull**
BF-1-51 Reserve Champion Senior Bull

BF-1-52 GRAND CHAMPION BULL **BF-1-53 RESERVE GRAND CHAMPION BULL**

(Champion and Reserve Champions competing)

GROUP CLASSES

Entry Fee: \$10

- BF-1-54 Get-of-Sire: Four animals by one sire shown in the above classes, both sexes represented
- BF-1-55 Junior Get-of-Sire: Three animals by one sire, both sexes represented, shown in classes 1-11, and 30-39
- BF-1-56 Breeder Six Head: The exhibitor of the breeders six head must be breeder and first owner, identified by the same member code for the animals exhibited. Cattle owned by other exhibitors may be included provided the exhibitor of the breeders six head is the breeder and first owner of the included animal(s). Animals must be exhibited in individual classes. Cattle bred and owned by a junior member(s) may be included if the exhibitor of the breeders six head is an individual or married couple and is the parent or legal guardian of the junior member(s).

DIVISION 2:

JUNIOR EXHIBITOR ANGUS SHOW

REGULATIONS: (All general beef rules apply to this division)

- a. Animals can be entered in Bred & Owned or Owned, but not entered in both classes.
Note: Bred & owned classes will not receive American Angus Association premium payment.

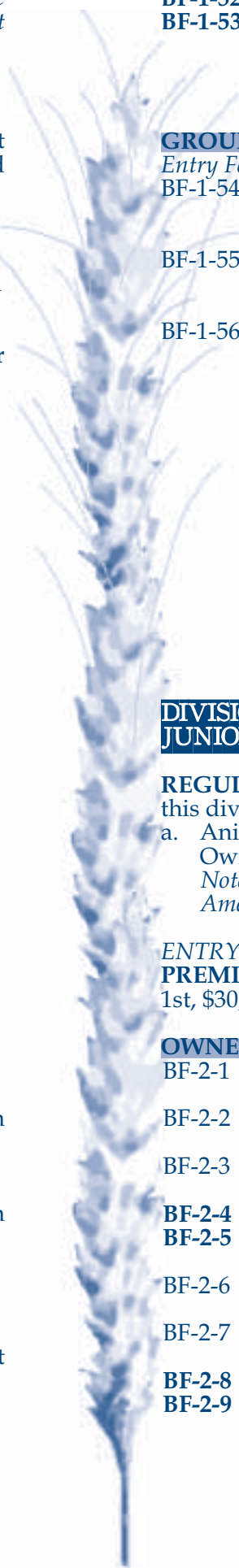
ENTRY FEE: \$10 per head

PREMIUMS:

1st, \$30; 2nd, \$20; 3rd, \$15; 4th, \$10; 5th, \$5

OWNED

- BF-2-1 Junior heifer calves calved March 1, 2005 or after
- BF-2-2 Junior heifer calves calved between Feb 1-28, 2005
- BF-2-3 Junior heifer calves calved between Jan 1-31, 2005
- BF-2-4 Champion Heifer Calf**
BF-2-5 Reserve Champion Heifer Calf
- BF-2-6 Late senior heifer calves calved between Nov 1-Dec 31, 2004
- BF-2-7 Early senior heifer calves calved between Sept 1-Oct 31, 2004
- BF-2-8 Champion Senior Heifer Calf**
BF-2-9 Reserve Champion Heifer Calf



- BF-2-10 Late summer yearling heifers calved between July 1-Aug 31, 2004
- BF-2-11 Early summer yearling heifers calved between May 1-June 30, 2004
- BF-2-12 Champion Intermediate Heifer**
- BF-2-13 Reserve Champion Intermediate Heifer**
- BF-2-14 April junior yearling heifers calved between April 1-30, 2004
- BF-2-15 March junior yearling heifers calved between March 1-31, 2004
- BF-2-16 Early junior yearling heifers calved between Jan 1-31, 2004
- BF-2-17 Early junior yearling heifers calved between Feb 1-29, 2004
- BF-2-18 Champion Junior Heifer**
- BF-2-19 Reserve Champion Junior Heifer**
- BF-2-20 Late senior yearling heifers calved between Nov 1-Dec 31, 2003
- BF-2-21 Early senior yearling heifers calved between Sept 1-Oct 31, 2003
- BF-2-22 Champion Senior Heifer**
- BF-2-23 Reserve Champion Senior Heifer**
- BF-2-26 Cow/calf pair (this class will not receive American Angus Association premium payment)

BRED & OWNED

- BF-2-27 Junior heifer calves calved Jan 1, 2005 or after
- BF-2-28 Junior heifer calves calved between Sept 1-Dec 31, 2004
- BF-2-29 Junior Yearling heifers calved between April 1-Aug 31, 2004
- BF-2-30 Junior yearling heifers calved between Jan 1-March 31, 2004
- BF-2-31 Senior yearling heifers calved between Sept 1-Dec 31, 2003
- BF-2-32 Grand Champion Bred & Owned Heifer**
- BF-2-33 Reserve Champion Bred & Owned Heifer**
- BF-2-34 Junior bull calves calved Jan 1, 2005 or after
- BF-2-35 Yearling bulls calved between Jan 1-Dec 31, 2004
- BF-2-36 Grand Champion Bred & Owned Bull**
- BF-2-37 Reserve Champion Bred & Owned Bull**

**DIVISION 3:
REGISTERED ANGUS
STEER SHOW**



\$350 in prize monies to be paid as listed, sponsored by Montana Angus Association. For more information contact Montana Angus Association, JoAnn Harmon; email: sharmon@middrivers.com

ENTRY FEE: \$25 per head

PREMIUMS:

Grand Champion- \$100
Reserve Grand Champion- \$50
\$20 of entry fee jackpotted with \$200 added
Payback based on sliding scale according to number of entries.

REGULATIONS:

- a. All animals must be polled (free of horns or scurs)
- b. All animals must have legible ear tattoo for identification. The tattoo must correspond with the tattoo number on the official registration certificate.
- c. Exhibitors must have the original registration certificate on each animal available for inspection at the show.
- d. All animals must be from a registered sire and dam. All animals must be registered in the herd book of the American Angus Assoc. The registration certificate issue date must be prior to the show.
- e. The skin color of all animals must be BLACK, except those animals having birth marks or white hairs on black skin. Animals red in color, or with white skin above the underline, in front of the navel or on a leg or foot, are not eligible to show.
- f. All animals must be shown within the official standard show classification of the American Angus Association. Only one person at a time shall lead animals into the show ring.
- g. For an exhibitor to be eligible at show for premium money contributed by the American Angus Association, each exhibitor is subject to Part 3, Section IX of the Association's rules entitled *Eligibility, Conformation and Structure of Animals Presented for Exhibition*.
- h. **BLOOD TYPING FOR PARENTAGE VERIFICATION-** Under the Association Rules each animal for which entry application (registration) is received, may be subjected to a blood type test to verify both **ACCURACY OF PARENTAGE AND BLOOD TYPE** as covered under Association Rules Part 3, Section II, Rule 2 (F), Staff of the American Angus Association must supervise the collection of blood samples.
****Grand & Reserve Champion Steers may be blood typed after the show.**



ANGUS STEER

- BF-3-1 Late senior steers calved between Nov 1 & Dec 31, 2004
- BF-3-2 Early senior steers calved between Sept 2 & Oct 31 2004
- BF-3-3 Late summer yearling steers calved between July 1 & Aug 31, 2004
- BF-3-4 Early summer yearling steers calved between May 1 & June 30, 2004
- BF-3-5 April junior yearling steers calved between Apr 1 & Apr 30, 2004
- BF-3-6 March junior yearling steers calved between Mar 1 & Mar 31, 2004
- BF-3-7 Early junior yearling steers calved between Jan 1 & Feb 28, 2004
- BF-3-8 **Grand Champion Steer**
- BF-3-9 **Reserve Grand Champion Steer**



DIVISION 4: OPEN HEREFORD & POLLED HEREFORD BREED SHOW

DIVISION 6: OPEN SHORTHORN BREED SHOW

DIVISION 8: ANY OTHER BREED SHOW

REGULATIONS:

- All animals must be registered on the records of the various Breed Associations of classes listed herein. Partnership owned animals must be entered in the name of owner appearing on the herd books of registry. Original registration papers must be provided. Legible tattoos are required. Applicable Breed Association Rules and Regulations shall govern if not addressed herein.
- Mothers of unweaned 2005 calves entered in registered classes will be allowed in the barn even if the cow is not entered, space permitting. Write pen or stall needed for nurse cow on entry form.
- All cattle entering Any Other Breed Division must be registered in their respective breed associations.
- All applicable breed association rules per breed represented shall govern if not addressed herein.
- Cattle entering Any Other Breed Divisions use Division 8 on your entry form for pre-entry purposes. The superintendent and management will determine specific shows after the entry deadline has passed. Any Other Breed Shows will be specified and scheduled dependent on number of entries received and exhibitors will be notified of pending schedule.

ENTRY FEES: \$15 per head

PREMIUMS

of head

- 1 or 2: 1st, \$70; 2nd, \$60
- 3 to 5: 1st, \$80; 2nd, \$70; 3rd, \$60; 4th, \$40
- 6 to 8: 1st, \$90; 2nd, \$80; 3rd, \$70; 4th, \$50; 5th, \$40 6th, \$30 ; 7th, \$20; 8th, \$10
- 9 plus: 1st, \$100; 2nd, \$90; 3rd, \$80; 4th, \$70; 5th, \$60; 6th, \$50; 7th, \$40; 8th, \$30; 9th, \$20
- Groups: 1st, \$50; 2nd, \$40; 3rd, \$20

Grand Champion Bull and Female:.....\$100
Reserve Champion Bull and Female:.....\$50

Sample Entry:

Class Code	Description
BF- (4) _ -10	Junior Hereford yearling heifer..
(fill in division number in blank space)	

HEIFER CALF

- BF-___-1 Spring heifer calves - born March 1, 2005 or after
- BF-___-2 Junior heifer calves - born Jan.1-Feb 28, 2005
- BF-___-3 Winter heifer calves - born Nov 1-Dec 31, 2004
- BF-___-4 Senior heifer calves - born Sept 1-Oct 31, 2004
- BF-___-5 **Champion Heifer Calf**
- BF-___-6 **Reserve Champion Heifer Calf**

JUNIOR HEIFER

- BF-___-7 Late summer yearling heifers - born July 1-Aug 31, 2004
- BF-___-8 Early summer yearling heifers - born May 1-June 30, 2004
- BF-___-9 Spring yearling heifers - born March 1-April 30, 2004
- BF-___-10 Junior yearling heifers - born Jan 1-Feb 28, 2004
- BF-___-11 **Champion Junior Heifer**
- BF-___-12 **Reserve Champion Junior Heifer**

SENIOR FEMALE

- BF-___-13 Senior yearling heifers - born Sept 1-Dec 31, 2003
- BF-___-14 Two year old cows with her calf at side
- BF-___-15 Three year & older cow with her calf at side
- BF-___-16 **Champion Senior Female**
- BF-___-17 **Reserve Champion Senior Female**
- BF-___-18 **GRAND CHAMPION FEMALE**
- BF-___-19 **RESERVE GRAND CHAMPION FEMALE**
(Champion and Reserve Champions competing)

BULL CALF

- BF-___-20 Spring bull calves - born March 1, 2005 or later
 BF-___-21 Junior bull calves - born Jan 1-Feb. 28, 2005
 BF-___-22 Winter bull calves - born Nov 1-Dec 31, 2004
 BF-___-23 Senior bull calves - born Sept 1-Oct 31, 2004
 BF-___-24 **Champion Bull Calf**
 BF-___-25 **Reserve Champion Bull Calf**

JUNIOR BULL

- BF-___-26 Late summer yearling bulls - born July 1-Aug 31, 2004
 BF-___-27 Early summer yearling bulls - born May 1-June 30, 2004
 BF-___-28 Spring yearling bulls born - March 1-April 30, 2004
 BF-___-29 Junior yearling bulls born - Jan 1-Feb 28, 2004
 BF-___-30 **Champion Junior Bull**
 BF-___-31 **Reserve Champion Junior Bull**

SENIOR BULL

- BF-___-32 Senior yearling bulls born July 1-Dec 31, 2003
 BF-___-33 Two year old bulls born January 1-June 30, 2003
 BF-___-34 **Champion Senior Bull**
 BF-___-35 **Reserve Champion Senior Bull**
 BF-___-36 **GRAND CHAMPION BULL**
 BF-___-37 **RESERVE GRAND CHAMPION BULL**
 (Champion and Reserve Champions competing)

ENTRY FEE: \$10

GROUP CLASSES

- BF-___-38 Pair of Heifers-Any pair of heifers that showed in classes 1-10
 BF-___-39 Pair of Bulls-Any pair of bulls that showed in classes 20-33
 BF-___-40 Produce of Dam - 2 head from the same dam (either sex) both animals shall have been exhibited in individual classes
 BF-___-41 Junior Get of Sire - 3 head, both sexes represented, all sired by same sire (from classes B-1 through B-4 or B-20 through B-23)
 BF-___-42 Senior Get of Sire - 4 head, both sexes represented, all sired by same sire (from classes B-1 through B-13 or B-20 through B-33)
 BF-___-43 Best 6 head - Owned by Exhibitor - all animals must have been shown in respective single classes, both sexes represented

**DIVISION 5: JUNIOR EXHIBITOR HEREFORD/
POLLED HEREFORD SHOW****DIVISION 7: JUNIOR EXHIBITOR SHORTHORN
SHOW****REGULATIONS:**

- All animals in the Junior Show must be registered in individual breed association. Exhibits must be registered and exhibited in owner's name. Original papers must be available for inspection.
- All applicable breed association rules per breed represented shall govern if not addressed herein.

ENTRY FEE: \$10

PREMIUMS:

1st, \$30; 2nd, \$20; 3rd, \$15; 4th, \$10; 5th, \$5

OWNED

- BF-___-44 Junior heifer calves born April 1, 2005 and after
 BF-___-45 Junior heifer calves - born Jan. 1 - Mar. 31, 2005
 BF-___-46 Senior heifer calves - born Sept. 1 - Dec. 31, 2004
 BF-___-47 Junior yearling bred heifers - born Apr. 1, - Aug. 31, 2004
 BF-___-48 Junior yearling bred heifers - born Jan. 1 - Mar. 31, 2004
 BF-___-49 Senior yearling bred heifers - born Sept. 1 - Dec. 31, 2003
 BF-___-50 **GRAND CHAMPION HEIFER**
 BF-___-51 **RESERVE GRAND CHAMPION HEIFER**

**DIVISION 9:
SUPREME CHAMPION CHALLENGE****REGULATIONS:**

The Grand Champion Bull and Grand Champion Female from each Open Breed or Any Other Breed show are eligible to compete. If, for whatever reason, the Grand Champion of any given show is unable to compete in this contest, then the Reserve Champion becomes eligible. A Supreme Champion Bull and Supreme Champion Female will be selected based upon the judge's score of how closely each animal meets the breed's standard. The scoring objective is based on that standard as opposed to comparing each animal, one against the other, such as a one breed class.

Entry Fee: None

PREMIUMS

\$ 500 Supreme Champion Bulls
 \$ 500 Supreme Champion Female

- BF-19-1 **Supreme Champion Bull**
 BF-19-2 **Supreme Champion Female**

